

Statistical Bulletin

Crime and Justice Series

A National Statistics Publication for Scotland



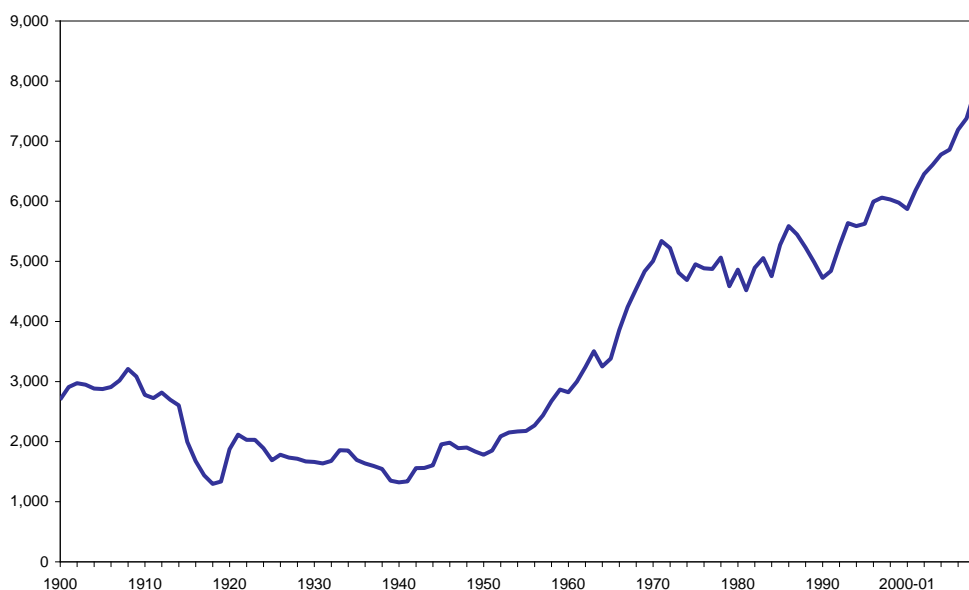
Prison statistics Scotland: 2009-10

20 December 2010

1. Introduction

1. This bulletin is part of a series on the criminal justice system, and shows data up to 2009-10 on Scottish prison population level and characteristics, as well as information on receptions to Scottish prisons and international comparisons.

Chart 1 Average daily prison population (Scotland): 1900 to 2009-10



2. The figures for 2009-10 follow the sustained increase observed in the prison population since 2000-01, reaching an average daily population of 7,964. The most recent figures give some indication that the rate of change may be slowing down to some extent since this represents a year on year increase of 2 per cent, compared to the 6 per cent rise during 2008-09. However, it is as yet too early to tell whether this represents the beginning of a longer term levelling out of the prison population.

3. The recent slowing down of the rate of increase is primarily driven by a notable drop in the size of the remand population over the past year. However, this is offset to some degree by the more modest but sustained increase in the direct sentenced population.

Contents

1. Introduction.....	1
2. Key points	4
3. Main findings	5
Prison population.....	5
Population profile.....	6
Home Detention Curfew	7
Receptions	8
International comparisons of prison population.....	9
4. Tables	11
Notes on tables	11
Average daily population in penal establishments by type of custody: 2000-01 to 2009-10 ..	11
Average daily population and maximum number by penal establishment: 2009-10 ...	12
Average daily population of sentenced offenders by length of sentence: 2000-01 to 2009-10	13
Offenders in custody by age, ethnic origin, religion, and supervision level: 30 June 2009 ...	14
Main crime/offence of offenders in custody by sex and custody type: 30 June 2009 ...	15
Community Justice Authority and local authority home area of offenders in custody by age and sex: 30 June 2009	16
Liberations from prison by custody type/sentence length and local authority area of home address: 2009-10	17
Prisoners released on Home Detention Curfew (HDC): 2007-08 to 2009-10...	18
Receptions to penal establishments by type of custody: 2000-01 to 2009-10 ...	19
Sentenced receptions to penal establishments by sentencing court: 2000-01 to 2009-10	20
Unruly certificate receptions by sex, age, crime/offence and time spent in custody: 2000-01 to 2009-10	20
Direct sentenced receptions to penal establishments by age and sex: 2000-01 to 2009-10	21
Direct sentenced receptions to penal establishments by main crime/offence: 2000-01 to 2009-10	22
Direct sentenced receptions to penal establishments by length of sentence, age and sex: 2000-01 to 2009-10	23
Length of sentence imposed for direct sentenced receptions by main crime/offence, age and sex: 2009-10	24
Fine default receptions to penal establishments by age, sex, length of sentence and amount of fine outstanding: 2000-01 to 2009-10	25
Prison population and rate per 100,000 population by jurisdiction: 2009 ...	26
5. Notes and definitions	27
Coverage and data collection.....	27
Counting conventions.....	27
Fine default.....	28
Unruly certificates.....	28
Home Detention Curfew	28
Supervision level	28
Community Justice Authorities.....	28
Classification of crimes/offences	29

List of charts

Chart 1 Average daily prison population (Scotland): 1900 to 2009-10 1
Chart 2 Average daily prison population by category of prisoner: 2000-01 to 2009-10 5
Chart 3 Age distribution of prisoners by sex: 30 June 2009 6
Chart 4 Imprisonment rate per 100,000 population (Scotland): June 2009 7
Chart 5 Average daily population on Home Detention Curfew: April 2007 to March 2010 8
Chart 6 Prison receptions by custody type: 2000-01 to 2009-10 8
Chart 7 Average sentence imposed (days): 2000-01 to 2009-10 9
Chart 8 Imprisonment rate per 100,000 population by jurisdiction: 2009 10

2. Key points

- The prison population has been increasing steadily since 2000-01, reaching an average daily population of 7,964 during 2009-10. This represents a year on year increase of 2 per cent compared to 6 per cent during 2008-09, and suggests that we may be seeing a certain degree of slowing down in the growth of the prison population in the short term (Table 1). However, it is as yet too early to tell whether this represents the beginning of a longer term levelling out of the prison population.
- This recent slowing down is driven mainly by a drop of nearly a tenth in the average daily population of remand prisoners to 1,522 (Table 1)..
- The sentenced population continues to show a steady increase of 5 per cent overall, reaching 6,441 in 2009-10, mainly due to increases in the medium term population with sentences of six months to four years. The short term population with sentences under 6 months fell notably over the past year to 439, a drop of just over 10 per cent, continuing the downward trend observed since 2006-07 (Table 3).
- During 2009-10, the average daily population increased by 2 per cent to 7,540 for men, and by 3 per cent to 424 for women. The drop in the remand population is particularly notable for women, with a fall of just over a fifth for both untried prisoners and those who have been convicted but not yet sentenced. This has led to a slowing down of the rate of increase relative to men, although this is partially offset by a higher rate of increase in the female sentenced population (15 per cent compared to 4 per cent for men) (Table 1).
- The average daily population on Home Detention Curfew (HDC) during 2009-10 was 371, a slight increase of 1 per cent over the previous year. The number of releases from prison on HDC was 1,885, a drop of 8 per cent compared to the previous year (Table 8).
- Receptions tend to show some year on year variation, but the overall trend has been consistently downward since 2006-07, the most recent figures showing a fall of 6 per cent (Table 9).

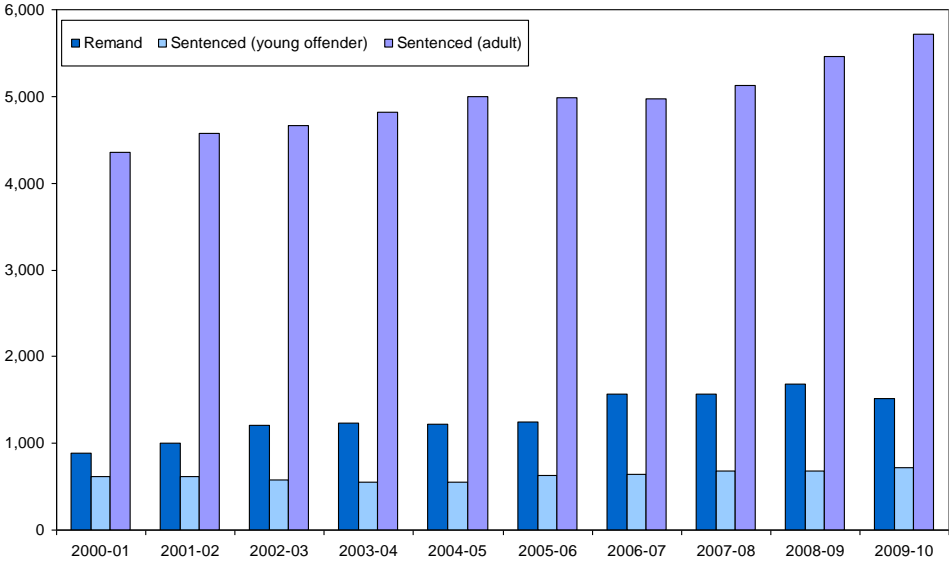
3. Main findings

Prison population

4. The prison population has been increasing steadily since 2000-01, reaching an average daily population of 7,964 during 2009-10. This represents a year on year increase of 2 per cent compared to 6 per cent during 2008-09, and suggests that we may be seeing a certain degree of levelling off in the growth of the prison population (Table 1). However, it is as yet too early to tell whether this represents the beginning of a longer term levelling out of the prison population. The potential drivers of the recently observed trends are discussed in more detail in *Scottish prison population projections: 2009-10 to 2018-19*.

5. This slowing down is driven mainly by a drop in the average daily population of remand prisoners (Chart 2).

Chart 2 Average daily prison population by category of prisoner: 2000-01 to 2009-10



6. The sentenced population continues to show a steady increase of 5 per cent overall, reaching 6,441 in 2009-10, mainly due to increases in the medium term population with sentences of six months to four years. The short term population with sentences under 6 months fell notably over the past year to 439, a drop of just over 10 per cent, continuing the downward trend observed since 2006-07 (Table 3).

7. Prisoners on remand or recalled from licence or supervision constitute a relatively small proportion of the prison population, although these categories have shown disproportionate increases over the past decade. The picture has become somewhat more complex over the past year. The current rate of growth for the recall population is in line with the general sentenced population at 4 per cent, reaching 621 during 2009-10. On the other hand, there is a drop in the remand population of nearly a tenth to 1,522 (Table 1).

8. Untried prisoners form the bulk of the remand population, 1,170 compared to 352 for remand prisoners who have been convicted but not sentenced. Remand receptions have been drifting downward over the past few years, and it is likely that the current focus on achieving the 26 week target for dealing with criminal cases in sheriff summary and district courts will have contributed to the fall in the population of untried prisoners. However, while the untried population has gone down over the past year by nearly a fifth, the population of convicted remand prisoners awaiting sentencing shows an increase of about a third, and further work will need to be carried out to establish whether there is a decrease in the time spent on remand at pre-trial stage which is being offset by an increase in the time spent on remand between conviction and sentencing.

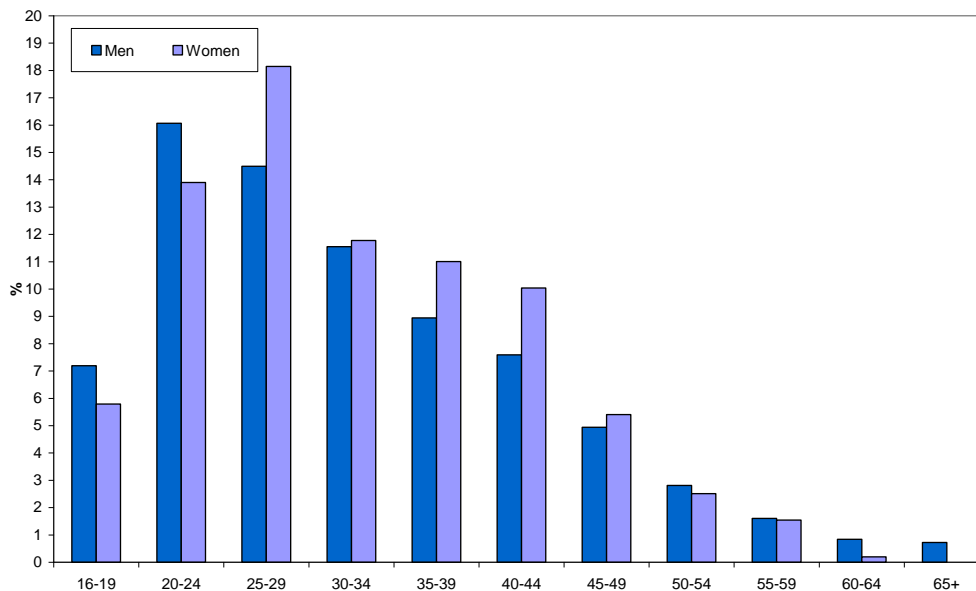
9. The drop in the remand population is particularly notable for women, with a fall of just over one fifth for both untried prisoners and those convicted but not yet sentenced. This has led to a slowing down of the rate of increase relative to men, although this is partially offset by a higher rate of increase in the female sentenced population (15 per cent compared to 4 per cent for men). During 2009-10, the average daily population increased by 2 per cent to 7,540 for men, and by 3 per cent to 424 for women (Table 1).

10. The daily population can fluctuate quite substantially compared to the average over the year. As in 2008, there were particularly high population levels during 2009, with a record peak of 8,248 in early July (Table 2).

Population profile

11. The prison population on 30 June 2009 was 8,183, of which 95 per cent were men (Table 4). The age profile of women prisoners tends to be somewhat older than that for men (Chart 3).

Chart 3 Age distribution of prisoners by sex: 30 June 2009

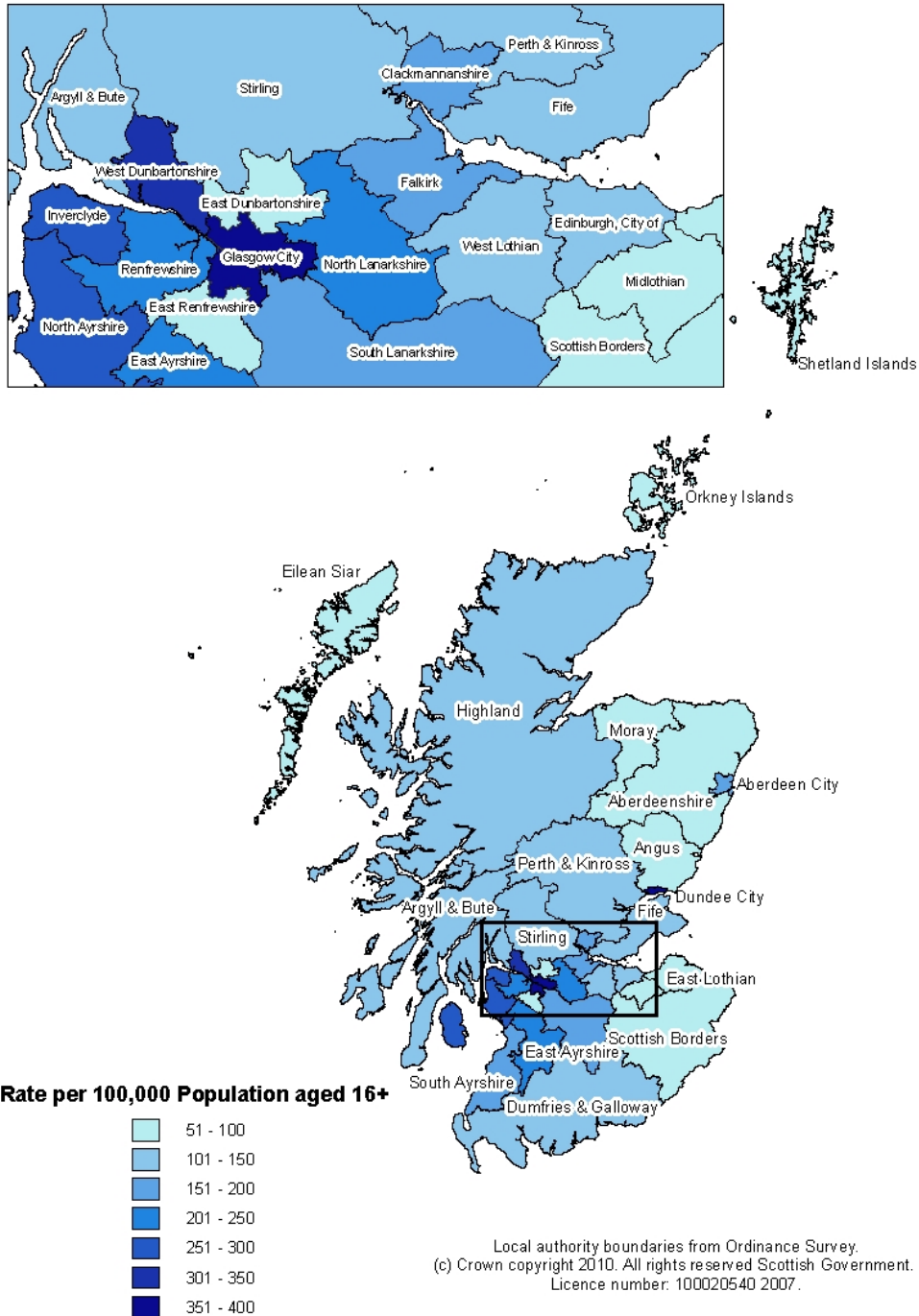


12. Just over half of the prison population (57 per cent) had a medium supervision level, and 9 per cent had a high supervision level. The remaining 34 per cent had a low level of supervision (Table 4). See Section 5 for details on supervision levels.

13. The crime category with the largest population of sentenced prisoners on 30 June 2009 was non-sexual violent crime (36 per cent), followed by the other crimes category (21 per cent). This category consisted mainly of drugs-related crimes, which make up 14 per cent of the total (Table 5).

14. The imprisonment rate per 100,000 population is highest for Glasgow and Dundee (351), followed by West Dunbartonshire (315). Inverclyde, North and East Ayrshire also have relatively high imprisonment rates (Chart 4). Aberdeenshire has the lowest rate (52), followed by East Dunbartonshire (61), Orkney (67), East Lothian and East Renfrewshire (69 for both) (Table 6).

Chart 4 Imprisonment rate per 100,000 population (Scotland): June 2009

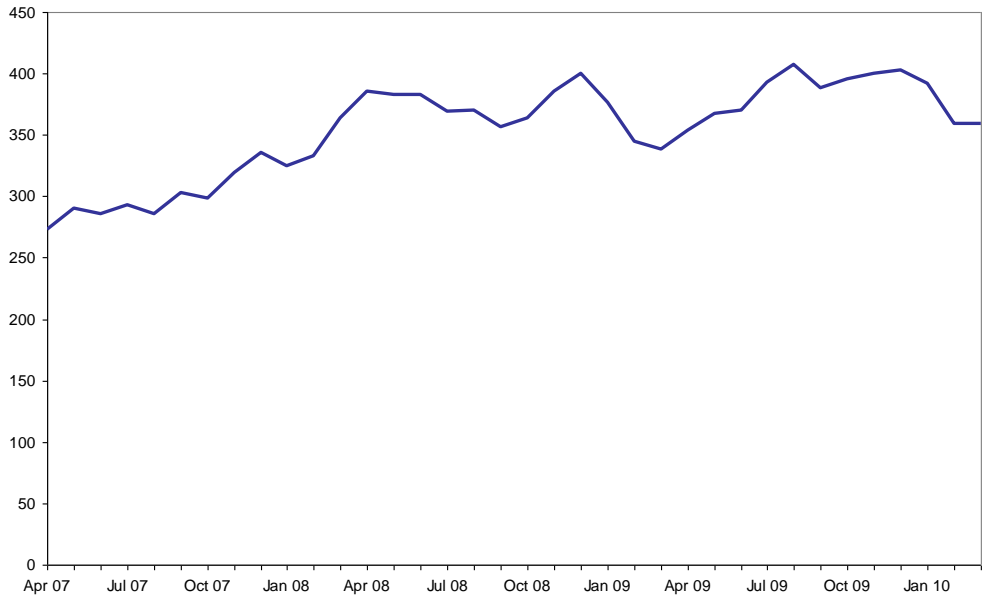


Home Detention Curfew

15. Release on Home Detention Curfew (HDC) for low risk prisoners nearing the end of their sentence started in July 2006. Since implementation, the daily population of prisoners on HDC has risen from about 300 during 2007 to just under 400 during 2009 (Chart 5).

16. The average daily population on HDC during 2009-10 was 371, a slight increase of 1 per cent over the previous year. The number of releases from prison on HDC was 1,885, a drop of 8 per cent compared to the previous year (Table 8).

Chart 5 Average daily population on Home Detention Curfew: April 2007 to March 2010

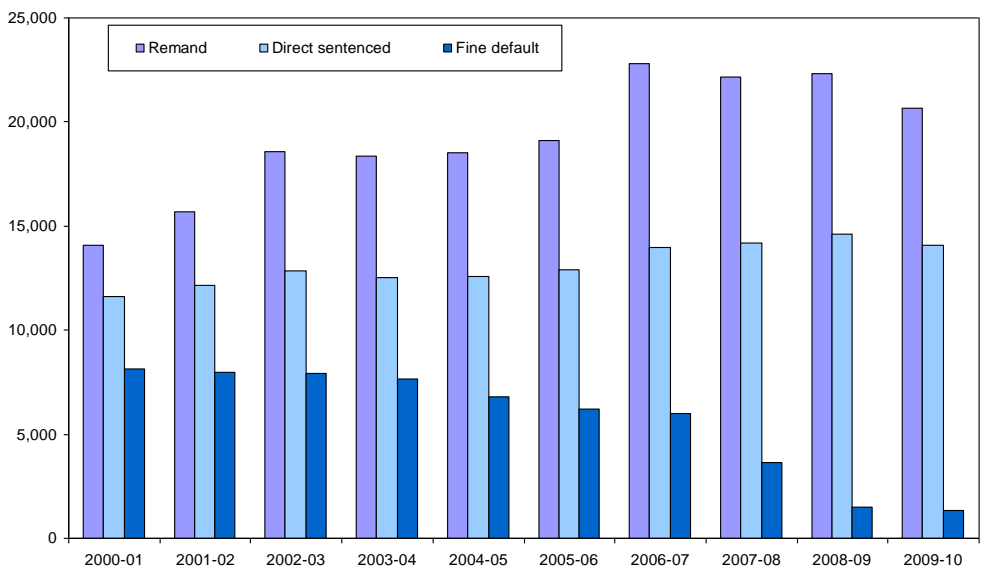


Receptions

17. Receptions tend to show some year on year variation (Chart 6), but the overall trend has been consistently downward since 2006-07, the most recent figures showing a fall of 6 per cent. Remand receptions have on the whole been drifting downward since 2006-07, with a notable drop of 7 per cent over the past year (Table 9).

18. A general downward drift can also be seen in sentenced receptions since 2002-03. This is primarily due to marked and consistent falls in the number of receptions for fine default, largely as a result of the use of Supervised Attendance Orders as an alternative to custody for non-payment of fines (Table 9). Direct sentenced receptions have in general drifted upward over the past 10 years, although the figures for 2009-10 show a 4 per cent fall over the past year to 14,056 (Table 12).

Chart 6 Prison receptions by custody type: 2000-01 to 2009-10



Direct sentenced receptions

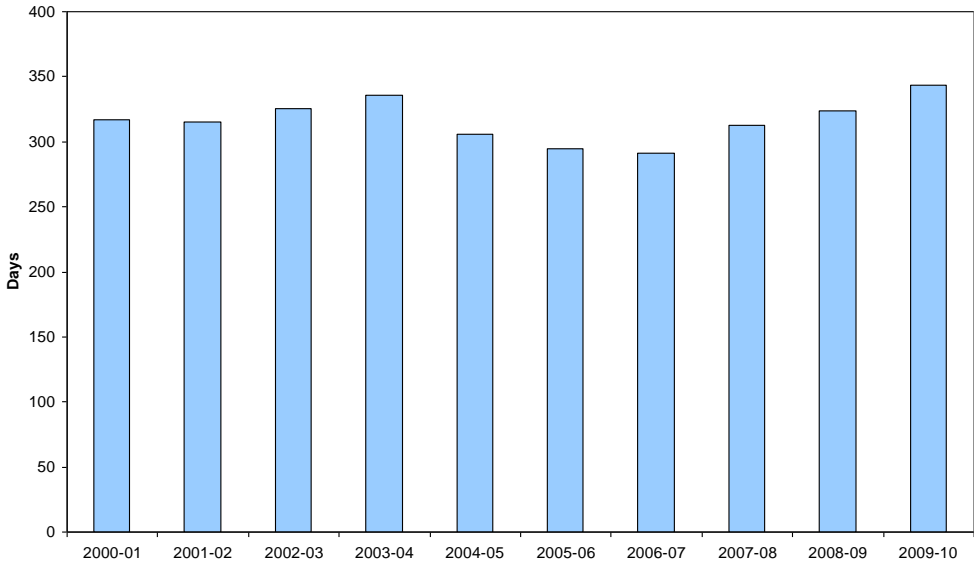
19. The bulk of the general rise in direct sentenced receptions over the past 10 years is due to increasing volumes of relatively low-tariff crimes and offences. These include crimes against public justice, handling offensive weapons, common assault and breach of the

peace. The rate of increase has been particularly marked since 2003-04, although, as noted above, the recent figures indicate a potential degree of change in this medium-term trend (Table 13).

20. In terms of types of crimes and offences, the most notable areas of recent change are receptions for drugs related crimes (up by 10 per cent to 1,463), handling offensive weapons (down by 8 per cent to 1,075), crimes of dishonesty (down by 6 per cent to 3,709, with two thirds of the drop due to decreased receptions for shoplifting and theft of/from a motor vehicle), common assault (down by 4 per cent to 1,956), and motor vehicle offences (down by 23 per cent to 687) (Table 13).

21. The average sentence length has fluctuated somewhat over the past 10 years, with the most recent figures showing a consistent increase over the past three or four years to a peak of 343 days (Table 14). This represents an increase of 6 per cent over the previous year (Chart 7).

Chart 7 Average sentence imposed (days): 2000-01 to 2009-10



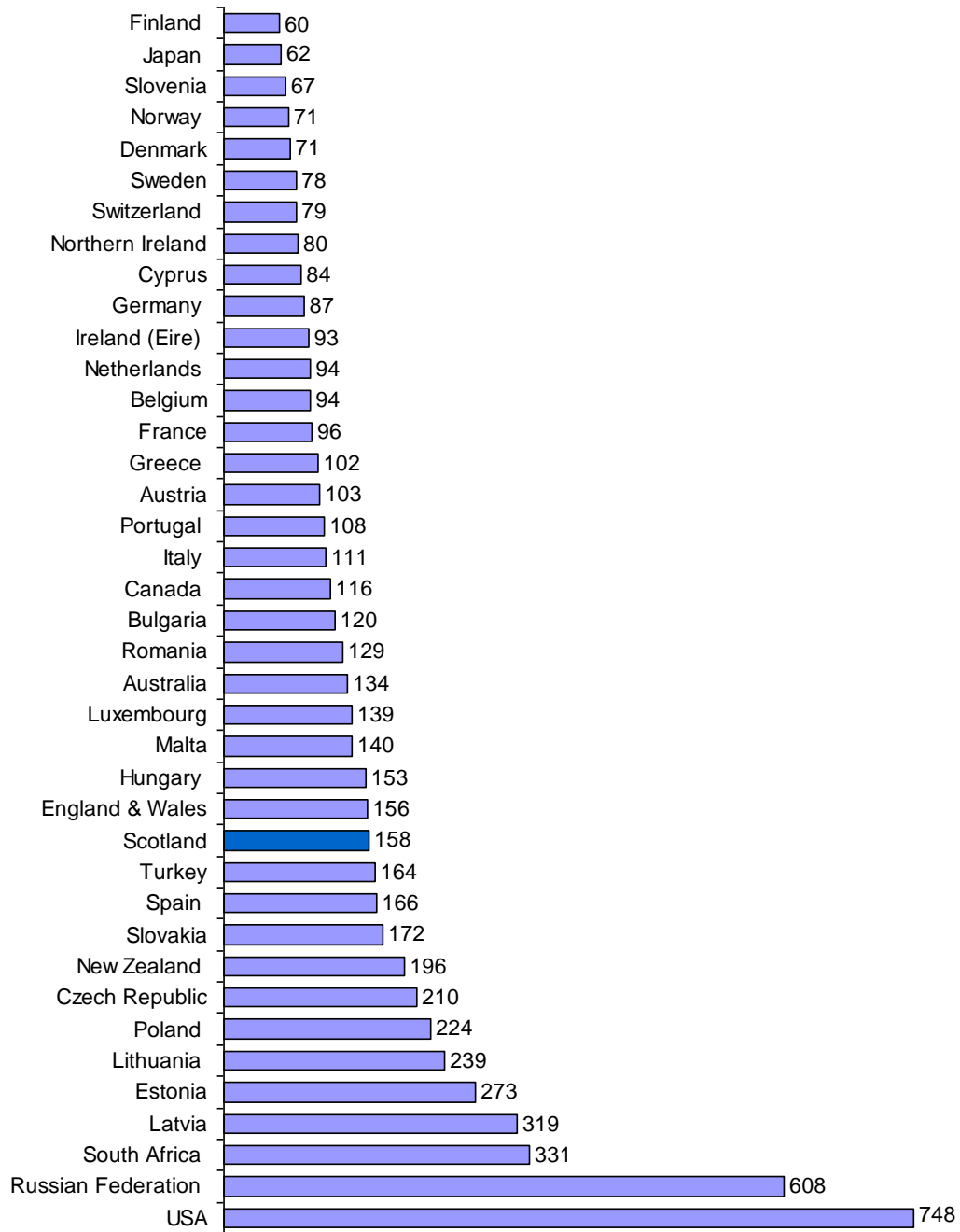
22. The shift in balance between less serious and more serious crimes highlighted in §19 appears to have had a short term impact on the average sentence length between 2003-04 and 2006-07. However, over the past 10 years there have also been increases in receptions for crimes of violence of over a third. These tend to result in heavier sentences and will therefore have a greater impact on the prison population in the longer term (Table 13).

23. The sentence category with the largest increase is for sentences between six months and four years, where there was a 15 per cent increase to 7,083 in 2009-10 compared to the previous year (Table 14). This category also accounts for half of all direct sentenced receptions.

International comparisons of prison population

24. In terms of prison population per 100,000 population, Scotland ranked thirteenth highest with 158, similar to England and Wales (156) and Hungary (153) (Chart 8). This is higher than most other EU countries, but substantially lower than the US, the Russian Federation and the Baltic states (Table 17). Comparisons of the prison population in different jurisdictions should be treated with caution due to the different justice systems and recording rules in operation.

Chart 8 Imprisonment rate per 100,000 population by jurisdiction: 2009



4. Tables

Notes on tables

25. Where a table refers to average daily populations, components may not add to totals due to rounding. Data are derived from a live information management system and updated and quality assured on an on-going basis. The figures shown here may therefore differ slightly from those published previously. Where substantive revisions have been made to improve the quality of the data, these will be indicated in the footnotes.

26. Population figures exclude prisoners on early release such as Home Detention Curfew, but include prisoners on temporary release such as extended home leave. Prisoners may be classified as unlawfully at large due to absconding (not returning from temporary release as scheduled) or having breached their Home Detention Curfew conditions: such prisoners are currently included in the population counts.

27. The following symbols are used throughout.

- Nil * Less than 0.5 n/a Not available

Average daily population in penal establishments by type of custody: 2000-01 to 2009-10

Table 1

	2000-01	2001-02	2002-03	2003-04	2004-05	2005-06	2006-07	2007-08	2008-09	2009-10	% change over past year
Total	5,869	6,182	6,452	6,606	6,776	6,856	7,187	7,377	7,827	7,964	2
<i>Remand</i>	890	996	1,207	1,237	1,223	1,250	1,572	1,561	1,679	1,522	-9
Untried	768	862	1,055	1,075	1,035	1,032	1,330	1,307	1,415	1,170	-17
Convicted awaiting sentence	122	134	152	163	188	218	243	255	264	352	34
Young offenders	232	262	273	256	262	285	361	355	334	305	-9
Adults	658	733	933	981	961	965	1,211	1,206	1,344	1,217	-9
<i>Sentenced</i>	4,975	5,184	5,244	5,367	5,552	5,605	5,614	5,814	6,147	6,441	5
Young offenders (direct sentence)	603	595	569	538	544	607	621	658	657	690	5
Adults (direct sentence)	4,116	4,304	4,380	4,477	4,602	4,554	4,433	4,518	4,880	5,120	5
Fine defaulters	57	54	56	55	51	47	46	28	11	9	-16
Recalls from supervision/licence	164	195	234	291	350	396	514	610	599	621	4
Others	35	36	6	7	5	1	*	*	-	-	-
<i>Sentenced by court martial</i>	2	*	*	*	1	-	-	*	1	-	n/a
<i>Civil prisoners</i>	1	2	1	1	1	1	1	1	*	1	n/a
Men	5,663	5,925	6,171	6,293	6,444	6,521	6,834	7,006	7,416	7,540	2
<i>Remand</i>	844	934	1,125	1,150	1,138	1,166	1,471	1,445	1,545	1,417	-8
Untried	737	820	1,000	1,016	979	975	1,258	1,232	1,330	1,107	-17
Convicted awaiting sentence	108	114	126	134	159	191	213	213	215	311	45
<i>Sentenced</i>	4,815	4,989	5,044	5,141	5,305	5,355	5,362	5,560	5,869	6,122	4
Young offenders (direct sentence)	574	569	548	514	514	583	591	634	633	663	5
Adults (direct sentence)	3,992	4,143	4,207	4,281	4,389	4,334	4,219	4,296	4,634	4,837	4
Fine defaulters	53	50	51	50	47	43	43	26	10	8	-18
Recalls from supervision/licence	163	193	233	289	348	394	510	603	592	615	4
Others	33	34	5	7	5	1	*	*	-	-	-
<i>Sentenced by court martial</i>	2	*	*	*	1	-	-	*	1	-	n/a
<i>Civil prisoners</i>	1	2	1	1	1	*	*	1	*	1	n/a
Women	206	257	282	314	332	334	353	371	412	424	3
<i>Remand</i>	46	62	81	88	85	84	101	117	133	105	-21
Untried	31	42	55	59	56	57	72	74	85	63	-25
Convicted awaiting sentence	15	20	26	29	29	27	29	42	49	41	-15
<i>Sentenced</i>	160	194	200	226	247	250	252	254	278	319	15
Young offenders (direct sentence)	29	26	20	24	30	24	30	24	25	28	13
Adults (direct sentence)	124	161	173	196	212	221	215	222	246	284	16
Fine defaulters	4	4	5	4	4	4	3	2	1	1	n/a
Recalls from supervision/licence	1	1	1	2	1	2	4	7	7	6	-14
Others	2	3	1	*	*	*	-	-	-	-	-
<i>Sentenced by court martial</i>	-	-	-	-	-	-	-	-	-	-	-
<i>Civil prisoners</i>	*	*	-	*	*	*	*	*	*	*	n/a

Average daily population and maximum number by penal establishment: 2009-10

Table 2

	Average daily population			Maximum number ¹		
	Men	Women	Total	Men	Women	Total
<i>Prisons</i>						
Aberdeen	229	-	229	258	-	258
Addiewell	704	-	704	722	-	722
Barlinnie	1,448	-	1,448	1,629	-	1,629
Cornton Vale	-	333	333	-	377	377
Dumfries	192	-	192	206	-	206
Edinburgh	885	-	885	960	-	960
Glenochil	665	-	665	675	-	675
Greenock	222	46	268	256	54	290
Inverness	144	-	144	167	2	167
Kilmarnock	549	-	549	554	-	554
Open Estate ²	264	-	264	324	-	324
Perth	594	-	594	646	-	646
Peterhead	305	-	305	306	-	306
Shotts	538	-	538	545	-	545
<i>Young Offenders Institutions</i>						
Cornton Vale	-	44	44	-	54	54
Perth	79	-	79	122	-	122
Polmont	722	-	722	769	-	769
<i>Legalised police cells</i> ³	*	*	*			
Total	7,540	424	7,964	7,834	464	8,248

Notes:

1. The figures in these columns cannot be added to produce a total maximum since the individual establishment figures relate to different days within the year. During 2009-10, the maximum number of prisoners held within the Scottish Prison Service estate on any one day was 8,248 on 7 July 2009. The maximum number of men prisoners was 7,834 on 7 July 2009, and the maximum number of women prisoners was 464 on 21 September 2009.

2. Castle Huntly and Noranside have been merged for administrative purposes to form the Open Estate.

3. See Section 5 for details on the [current prison estate](#).

**Average daily population of sentenced offenders by length of sentence:
2000-01 to 2009-10**

Table 3

	2000-01	2001-02	2002-03	2003-04	2004-05	2005-06	2006-07	2007-08	2008-09	2009-10	% change over past year
Total	4,975	5,184	5,245	5,367	5,552	5,605	5,614	5,814	6,147	6,441	5
Fine default	57	54	56	55	51	47	46	28	11	9	-16
Less than 3 months	75	83	88	68	81	101	124	116	98	89	-9
3 months - less than 6 months	416	440	433	403	451	443	444	426	402	350	-13
6 months - less than 2 years	1,060	1,187	1,175	1,163	1,161	1,214	1,159	1,226	1,568	1,768	13
2 years - less than 4 years	776	780	814	857	884	913	959	1,058	1,099	1,211	10
4 years or over (excluding life)	1,800	1,802	1,837	1,931	1,956	1,840	1,700	1,652	1,641	1,629	-1
Life/Section 205/206 sentences	592	606	601	593	614	652	668	698	728	764	5
Persons recalled from supervision/licence	164	195	234	291	350	396	514	610	599	621	4
Others	35	36	6	7	5	1	*	*	-	-	-
Young offenders	616	611	579	551	558	624	644	685	686	719	5
Fine default	7	7	7	6	5	5	4	2	1	1	-
Less than 3 months	12	13	13	9	9	14	13	13	11	8	-21
3 months - less than 6 months	79	77	63	51	55	57	58	59	50	45	-10
6 months - less than 2 years	246	243	231	216	212	241	241	243	267	307	15
2 years - less than 4 years	114	112	112	111	118	142	136	175	165	182	11
4 years or over (excluding life)	125	125	131	132	130	127	143	136	134	126	-6
Life/Section 205/206 sentences	27	24	19	19	19	26	30	31	30	22	-29
Persons recalled from supervision/licence	4	6	3	7	8	11	19	25	28	28	-2
Others	1	3	*	1	1	*	-	-	-	-	-
Adults	4,359	4,573	4,665	4,816	4,994	4,982	4,970	5,129	5,461	5,723	5
Fine default	50	47	49	49	46	43	41	26	10	8	-15
Less than 3 months	63	70	76	59	71	87	111	102	87	81	-8
3 months - less than 6 months	337	363	370	353	395	386	386	367	352	305	-13
6 months - less than 2 years	813	944	944	947	949	972	918	983	1,301	1,461	12
2 years - less than 4 years	662	669	702	746	766	771	823	883	935	1,029	10
4 years or over (excluding life)	1,675	1,677	1,707	1,798	1,826	1,712	1,557	1,516	1,507	1,503	*
Life/Section 205/206 sentences	565	582	582	574	595	625	639	666	698	742	6
Persons recalled from supervision/licence	159	189	231	284	342	384	495	585	571	594	4
Others	34	33	5	6	4	1	*	*	-	-	-
Men	4,815	4,989	5,045	5,142	5,305	5,355	5,362	5,559	5,869	6,122	4
Fine default	53	50	51	50	47	43	43	26	10	8	-18
Less than 3 months	69	78	83	62	75	94	116	108	91	83	-9
3 months - less than 6 months	394	416	407	378	421	415	419	402	375	323	-14
6 months - less than 2 years	1,007	1,119	1,118	1,084	1,075	1,120	1,070	1,133	1,465	1,645	12
2 years - less than 4 years	749	740	766	817	831	862	904	1,002	1,035	1,128	9
4 years or over (excluding life)	1,766	1,763	1,792	1,877	1,904	1,790	1,650	1,605	1,593	1,580	-1
Life/Section 205/206 sentences	581	596	588	576	598	635	651	680	709	740	4
Persons recalled from supervision/licence	163	193	233	289	348	394	510	603	592	615	4
Others	33	34	5	7	5	1	*	*	-	-	-
Women	160	195	200	226	247	250	252	254	278	319	15
Fine default	4	4	5	4	4	4	3	2	1	1	-
Less than 3 months	6	5	5	5	6	7	8	8	7	7	-11
3 months - less than 6 months	23	24	26	25	30	27	25	24	28	26	-4
6 months - less than 2 years	53	68	57	79	86	94	90	92	103	123	19
2 years - less than 4 years	27	40	48	41	52	51	55	56	64	83	28
4 years or over (excluding life)	34	38	46	54	52	49	49	47	48	49	2
Life/Section 205/206 sentences	11	11	13	17	16	17	18	18	19	24	24
Persons recalled from supervision/licence	1	1	1	2	1	2	4	7	7	6	-14
Others	2	3	1	*	*	*	-	-	-	-	-

**Offenders in custody by age, ethnic origin, religion,
and supervision level: 30 June 2009** **Table 4**

	Male	Female	All
Total	7,767	416	8,183
Age			
Under 16	-	-	-
16	44	2	46
17	146	13	159
18	248	7	255
19	290	8	298
20	320	16	336
21	309	10	319
22	320	14	334
23 - 24	677	32	709
25 - 29	1,467	94	1,561
30 - 34	1,169	61	1,230
35 - 39	905	57	962
40 - 44	768	52	820
45 - 49	500	28	528
50 - 54	284	13	297
55 - 59	162	8	170
60 - 64	85	1	86
65 or over	73	-	73
Ethnic background			
White	7,433	396	7,829
Black-Caribbean	37	6	43
Black-African	51	3	54
Black-Other	26	1	27
Indian	10	1	11
Pakistani	71	1	72
Bangladeshi	6	-	6
Chinese	72	7	79
Other Asian	24	-	24
Mixed	17	1	18
Other	20	-	20
Religion			
Church Of Scotland	2,446	92	2,538
Roman Catholic	1,820	85	1,905
Church Of England	76	3	79
Baptist	8	-	8
Episcopalian	2	-	2
Christian	237	15	252
Muslim	165	2	167
Buddhist	45	2	47
Jehovah's Witness	2	-	2
Sikh	8	1	9
Hindu	2	-	2
Jewish	4	-	4
Mormon	4	-	4
Other	68	9	77
None	2,880	207	3,087
Supervision level			
High	728	11	739
Medium	4,386	298	4,684
Low	2,653	107	2,760

Note: See Section 5 for details on [supervision levels](#).

Main crime/offence of offenders in custody by sex and custody type: 30 June 2009

Table 5

	Remand			Sentenced			Remand			Sentenced		
	Men	Women	All	Men	Women	All	Men	Women	All	Men	Women	All
Total crimes & offences	1,477	89	1,566	6,290	327	6,617	100	100	100	100	100	100
Crimes	1,154	76	1,230	4,804	293	5,097	78	85	79	76	90	77
<i>Non-sexual crimes of violence</i>	439	24	463	2,287	96	2,383	30	27	30	36	29	36
Homicide	64	5	69	800	38	838	4	6	4	13	12	13
Serious assault and attempted murder	269	16	285	1,025	47	1,072	18	18	18	16	14	16
Robbery	81	2	83	410	10	420	5	2	5	7	3	6
Other	25	1	26	52	1	53	2	1	2	1	*	1
<i>Crimes of indecency</i>	60	-	60	370	2	372	4	-	4	6	1	6
Rape and attempted rape	32	-	32	170	1	171	2	-	2	3	*	3
Indecent assault	1	-	1	26	-	26	*	-	*	*	-	*
Lewd and indecent behaviour	20	-	20	122	1	123	1	-	1	2	*	2
Other	7	-	7	52	-	52	*	-	*	1	-	1
<i>Crimes of dishonesty</i>	204	23	227	758	88	846	14	26	14	12	27	13
Housebreaking	68	1	69	240	9	249	5	1	4	4	3	4
Theft by opening lockfast places (OLP)	12	-	12	24	2	26	1	-	1	*	1	*
Theft from a motor vehicle (by OLP)	10	-	10	25	1	26	1	-	1	*	*	*
Theft of a motor vehicle	11	-	11	31	-	31	1	-	1	*	-	*
Shoplifting	43	15	58	199	35	234	3	17	4	3	11	4
Other theft	28	5	33	121	18	139	2	6	2	2	6	2
Fraud	7	1	8	65	12	77	*	1	1	1	4	1
Other	25	1	26	53	11	64	2	1	2	1	3	1
<i>Fire-raising, vandalism etc</i>	46	2	48	100	6	106	3	2	3	2	2	2
Fire-raising	7	1	8	28	2	30	*	1	1	*	1	*
Vandalism etc	39	1	40	72	4	76	3	1	3	1	1	1
<i>Other crimes</i>	405	27	432	1,289	101	1,390	27	30	28	20	31	21
Crimes against public justice	118	9	127	91	8	99	8	10	8	1	2	1
Handling offensive weapons	179	6	185	364	7	371	12	7	12	6	2	6
Drugs	100	12	112	815	81	896	7	13	7	13	25	14
Other	8	-	8	19	5	24	1	-	1	*	2	*
Offences	323	13	336	906	30	936	22	15	21	14	9	14
<i>Miscellaneous offences</i>	315	13	328	733	30	763	21	15	21	12	9	12
Common assault	145	6	151	416	20	436	10	7	10	7	6	7
Breach of the peace	82	2	84	191	7	198	6	2	5	3	2	3
Drunkenness	-	-	-	-	-	-	-	-	-	-	-	-
Breach of social work orders	19	1	20	21	1	22	1	1	1	*	*	*
Other	69	4	73	105	2	107	5	4	5	2	1	2
<i>Motor vehicle offences</i>	8	-	8	173	-	173	1	-	1	3	-	3
Dangerous and careless driving	4	-	4	41	-	41	*	-	*	1	-	1
Drunk driving	3	-	3	26	-	26	*	-	*	*	-	*
Speeding	-	-	-	-	-	-	-	-	-	-	-	-
Unlawful use of vehicle	1	-	1	104	-	104	*	-	*	2	-	2
Vehicle defect offences	-	-	-	-	-	-	-	-	-	-	-	-
Other	-	-	-	2	-	2	-	-	-	*	-	*
Unknown charge	-	-	-	573	4	577	-	-	-	9	1	9
Other jurisdiction charge	-	-	-	7	-	7	-	-	-	*	-	*

Notes: Civil prisoners are excluded from this table. See Section 5 for definitions of [main crime/offence](#) and [crime categories](#).

**Community Justice Authority and local authority home area of offenders in custody
by age and sex: 30 June 2009** **Table 6**

	Adult			Young offender			All			Imprisonment rate per 100,000 population ¹
	Men	Women	All	Men	Women	All	Men	Women	All	
Total	6,719	370	7,089	1,048	46	1,094	7,767	416	8,183	191
Tayside	538	50	588	61	6	67	599	56	655	198
Angus	74	4	78	9	1	10	83	5	88	97
Dundee City	342	33	375	41	4	45	383	37	420	351
Perth & Kinross	122	13	135	11	1	12	133	14	147	121
South West Scotland	662	48	710	151	8	159	813	56	869	204
Dumfries & Galloway	127	12	139	23	1	24	150	13	163	132
East Ayrshire	172	11	183	47	3	50	219	14	233	236
North Ayrshire	221	12	233	54	-	54	275	12	287	259
South Ayrshire	142	13	155	27	4	31	169	17	186	200
Fife and Forth Valley	568	23	591	114	5	119	682	28	710	132
Clackmannanshire	66	3	69	13	-	13	79	3	82	200
Falkirk	141	10	151	36	2	38	177	12	189	152
Fife	293	8	301	50	2	52	343	10	353	118
Stirling	68	2	70	15	1	16	83	3	86	118
Glasgow City	1,460	57	1,517	205	3	208	1,665	60	1,725	351
Northern	627	38	665	88	8	96	715	46	761	111
Aberdeen City	291	20	311	39	2	41	330	22	352	195
Aberdeenshire	87	5	92	9	2	11	96	7	103	52
Eilean Siar	14	1	15	2	-	2	16	1	17	78
Highland	158	9	167	20	2	22	178	11	189	104
Moray	53	3	56	14	2	16	67	5	72	100
Orkney Islands	9	-	9	2	-	2	11	-	11	67
Shetland Islands	15	-	15	2	-	2	17	-	17	95
Lothian and Borders	799	37	836	104	3	107	903	40	943	121
East Lothian	44	2	46	8	-	8	52	2	54	69
Edinburgh, City of	497	30	527	65	1	66	562	31	593	146
Midlothian	45	-	45	11	-	11	56	-	56	86
Scottish Borders	63	2	65	10	1	11	73	3	76	82
West Lothian	150	3	153	10	1	11	160	4	164	120
Lanarkshire	810	39	849	169	6	175	979	45	1,024	198
North Lanarkshire	435	23	458	90	3	93	525	26	551	210
South Lanarkshire	375	16	391	79	3	82	454	19	473	187
Northern Strathclyde	716	42	758	131	2	133	847	44	891	174
Argyll & Bute	59	8	67	14	-	14	73	8	81	107
East Dunbartonshire	42	1	43	9	-	9	51	1	52	61
East Renfrewshire	44	2	46	3	-	3	47	2	49	69
Inverclyde	138	10	148	26	-	26	164	10	174	263
Renfrewshire	249	10	259	39	2	41	288	12	300	215
West Dunbartonshire	184	11	195	40	-	40	224	11	235	315
Outwith Scotland	259	13	272	20	-	20	279	13	292	
No fixed abode	278	23	301	5	5	10	283	28	311	
Unidentifiable address	2	-	2	-	-	-	2	-	2	

Notes: See Section 5 for details on [Community Justice Authorities](#). Details on the length of sentence of offenders in custody are published on the web in Table 6a.

1. The imprisonment rate is based on the General Register Office for Scotland mid-year 16+ population estimates for 2009. The Scotland level rate includes prisoners with home addresses outwith Scotland and those with no fixed abode.

Liberations from prison by custody type/sentence length and local authority area of home address: 2009-10 **Table 7**

	Remand	Fine default	Less than 6 months	6 months - less than 1 year	1 year - less than 4 years	4 years or over	Life/Section 205 /206 sentences	Recalls from supervision/license	Others	Total
Total	8,751	360	3,959	3,242	3,159	480	40	342	38	20,371
Tayside	820	16	360	319	256	29	2	32	-	1,834
Angus	174	5	60	49	32	2	1	5	-	328
Dundee City	477	8	219	182	174	21	-	21	-	1,102
Perth & Kinross	169	3	81	88	50	6	1	6	-	404
South West Scotland	705	32	530	464	372	30	2	30	2	2,167
Dumfries & Galloway	110	7	120	77	63	7	1	12	-	397
East Ayrshire	230	9	145	129	109	4	1	6	2	635
North Ayrshire	254	13	122	152	116	11	-	8	-	676
South Ayrshire	111	3	143	106	84	8	-	4	-	459
Fife and Forth Valley	954	27	398	376	323	46	1	32	4	2,161
Clackmannanshire	112	6	21	36	38	9	-	3	3	228
Falkirk	249	11	147	113	78	6	-	3	1	608
Fife	469	8	188	168	159	22	-	18	-	1,032
Stirling	124	2	42	59	48	9	1	8	-	293
Glasgow City	1,870	72	724	558	657	100	12	68	19	4,080
Northern	961	94	362	301	322	47	-	27	5	2,119
Aberdeen City	418	41	99	103	170	19	-	13	2	865
Aberdeenshire	101	11	45	43	47	5	-	5	-	257
Eilean Siar	5	1	7	15	9	-	-	1	-	38
Highland	312	29	136	93	69	15	-	7	3	664
Moray	83	12	67	30	16	7	-	1	-	216
Orkney Islands	15	-	2	3	7	-	-	-	-	27
Shetland Islands	27	-	6	14	4	1	-	-	-	52
Lothian and Borders	1,175	31	506	322	335	61	9	54	1	2,494
East Lothian	60	5	64	20	23	1	2	4	-	179
Edinburgh, City of	688	15	233	181	209	39	3	31	1	1,400
Midlothian	121	-	30	28	18	6	-	3	-	206
Scottish Borders	96	5	69	37	36	3	-	8	-	254
West Lothian	210	6	110	56	49	12	4	8	-	455
Lanarkshire	1,014	22	443	424	379	58	6	39	3	2,388
North Lanarkshire	524	13	223	237	210	26	3	23	2	1,261
South Lanarkshire	490	9	220	187	169	32	3	16	1	1,127
Northern Strathclyde	762	42	367	308	325	58	6	29	2	1,899
Argyll & Bute	95	10	39	43	33	3	1	3	-	227
East Dunbartonshire	47	1	21	18	28	7	-	4	-	126
East Renfrewshire	44	1	19	13	19	2	1	5	-	104
Inverclyde	147	2	79	44	61	11	-	5	-	349
Renfrewshire	245	8	100	93	99	22	2	6	2	577
West Dunbartonshire	184	20	109	97	85	13	2	6	-	516
Outwith Scotland	177	9	58	48	95	23	1	8	2	421
No fixed abode	307	15	209	121	94	28	1	23	-	798
Unidentifiable address	6	-	2	1	1	-	-	-	-	10

Notes: Figures include only those prisoners who are liberated into the community. This excludes prisoners who are deceased, deported, in a hospital, transferred cross border, repatriated, and liberated on appeal or to immigration authorities. If a prisoner is liberated more than once during the year, they will be counted more than once. Further breakdowns for adults and young offenders are published on the web in Tables 7a-b.

**Prisoners released on Home Detention Curfew (HDC):
2007-08 to 2009-10**

Table 8

	2007-08	2008-09	2009-10
Average daily population on HDC	309	371	382
Young offenders	53	49	38
Adults	256	323	344
Men	273	327	342
Women	36	45	41
Number of HDC releases	2,082	2,056	1,885
Young offenders	410	296	190
Adults	1,672	1,760	1,695
Men	1,857	1,804	1,674
Women	225	252	211
Number of recalls to custody from HDC ¹	511	461	393
Young offenders	133	71	50
Adults	378	390	343
Men	459	410	346
Women	52	51	47
Number of re-admissions to custody from HDC ²	66	68	53
Young offenders	13	13	3
Adults	53	55	50
Men	63	59	49
Women	3	9	4

Notes: See Section 5 for details of the [HDC scheme](#).

1. Figures for recalls in 2008-09 were not published previously due to technical difficulties in recording the outcome of recall procedures in certain cases. The dataset has now been revised to address these issues and the revised figures for 2007-08 are about 10% lower than those published previously.

2. Re-admissions typically involve a voluntary return to custody.

Receptions to penal establishments by type of custody: 2000-01 to 2009-10 **Table 9**

	2000-01	2001-02	2002-03	2003-04	2004-05	2005-06	2006-07	2007-08	2008-09	2009-10	% change over past year
Total	34,082	36,120	39,782	39,076	38,349	38,749	43,502	40,453	38,978	36,528	-6
<i>Remand</i>	14,097	15,673	18,596	18,385	18,538	19,106	22,811	22,136	22,300	20,640	-7
<i>Unruly certificate</i>	17	30	25	22	20	24	29	15	10	5	-50
<i>Sentenced</i>	19,926	20,328	20,956	20,437	19,655	19,490	20,427	18,232	16,561	15,828	-4
Young offenders	3,651	3,585	3,299	2,877	2,674	2,934	2,982	2,759	2,449	2,325	-5
Direct sentenced	2,492	2,391	2,225	2,002	1,948	2,163	2,285	2,356	2,264	2,145	-5
Fine defaulters	1,159	1,194	1,074	875	726	771	697	403	185	180	-3
Adults	16,106	16,557	17,437	17,297	16,709	16,209	16,977	15,061	13,691	13,064	-5
Direct sentenced	9,103	9,785	10,603	10,520	10,628	10,759	11,705	11,848	12,370	11,911	-4
Fine defaulters	7,003	6,772	6,834	6,777	6,081	5,450	5,272	3,213	1,321	1,153	-13
Recalls from supervision/licence	169	186	220	263	272	347	468	412	421	439	4
<i>Sentenced by court martial</i>	2	2	3	1	6	-	-	2	1	-	n/a
<i>Civil prisoners</i>	10	8	11	12	6	4	4	11	4	12	200
<i>Legalised police cells</i>	30	79	191	219	124	125	231	57	102	43	-58
Men	31,799	33,472	36,673	35,856	35,204	35,695	40,085	37,062	35,595	33,552	-6
<i>Remand</i>	13,047	14,330	16,881	16,601	16,786	17,375	20,809	19,966	20,054	18,795	-6
<i>Unruly certificate</i>	17	28	24	21	19	24	26	14	10	5	-50
<i>Sentenced</i>	18,695	19,032	19,568	19,020	18,269	18,173	19,039	17,016	15,428	14,703	-5
Young offenders	3,446	3,391	3,126	2,704	2,520	2,819	2,808	2,628	2,321	2,194	-5
Direct sentenced	2,360	2,257	2,102	1,883	1,827	2,075	2,155	2,243	2,145	2,020	-6
Fine defaulters	1,086	1,134	1,024	821	693	744	653	385	176	174	-1
Adults	15,084	15,455	16,223	16,057	15,481	15,012	15,775	13,986	12,696	12,083	-5
Direct sentenced	8,669	9,230	10,013	9,861	9,898	10,015	10,902	11,019	11,464	11,014	-4
Fine defaulters	6,415	6,225	6,210	6,196	5,583	4,997	4,873	2,967	1,232	1,069	-13
Recalls from supervision/licence	165	186	219	259	268	342	456	402	411	426	4
<i>Sentenced by court martial</i>	2	2	3	1	6	-	-	2	1	-	n/a
<i>Civil prisoners</i>	10	8	11	12	6	4	3	10	3	11	267
<i>Legalised police cells</i>	28	72	186	201	118	119	208	54	99	38	-62
Women	2,283	2,648	3,109	3,220	3,145	3,054	3,417	3,391	3,383	2,976	-12
<i>Remand</i>	1,050	1,343	1,715	1,784	1,752	1,731	2,002	2,170	2,246	1,845	-18
<i>Unruly certificate</i>	-	2	1	1	1	-	3	1	-	-	-
<i>Sentenced</i>	1,231	1,296	1,388	1,417	1,386	1,317	1,388	1,216	1,133	1,125	-1
Young offenders	205	194	173	173	154	115	174	131	128	131	2
Direct sentenced	132	134	123	119	121	88	130	113	119	125	5
Fine defaulters	73	60	50	54	33	27	44	18	9	6	-33
Adults	1,022	1,102	1,214	1,240	1,228	1,197	1,202	1,075	995	981	-1
Direct sentenced	434	555	590	659	730	744	803	829	906	897	-1
Fine defaulters	588	547	624	581	498	453	399	246	89	84	-6
Recalls from supervision/licence	4	-	1	4	4	5	12	10	10	13	30
<i>Sentenced by court martial</i>	-	-	-	-	-	-	-	-	-	-	-
<i>Civil prisoners</i>	-	-	-	-	-	-	1	1	1	1	-
<i>Legalised police cells</i>	2	7	5	18	6	6	23	3	3	5	67

Notes: Receptions do not equate to persons received since someone receiving a custodial sentence after a period on remand, or several custodial sentences at different times or from different courts, will be counted more than once. [Counting conventions](#) are described in more detail in Section 5.

**Sentenced receptions to penal establishments by sentencing court:
2000-01 to 2009-10**

Table 10

	2000-01	2001-02	2002-03	2003-04	2004-05	2005-06	2006-07	2007-08	2008-09	2009-10
Total	19,757	20,142	20,736	20,174	19,383	19,143	19,959	17,820	16,140	15,389
High	1,096	1,168	1,269	1,291	948	848	868	851	791	777
Sheriff (solemn & summary procedure)	14,124	14,586	15,184	14,708	14,863	15,407	16,124	14,963	14,371	13,609
District & Stipendiary Magistrate ¹	4,405	4,265	4,204	4,071	3,468	2,787	2,871	1,893	881	914
Other	132	123	79	104	104	101	96	113	97	89
	%									
High	6	6	6	6	5	4	4	5	5	5
Sheriff (solemn & summary procedure)	71	72	73	73	77	80	81	84	89	88
District & Stipendiary Magistrate ¹	22	21	20	20	18	15	14	11	5	6
Other	1	1	*	1	1	1	*	1	1	1

Note: Excludes receptions of people recalled from supervision/licence as court details are normally unavailable.

1. Includes Justice of the Peace courts from March 2008.

**Unruly certificate receptions by sex, age, crime/offence and time spent in custody:
2000-01 to 2009-10**

Table 11

	2000-01	2001-02	2002-03	2003-04	2004-05	2005-06	2006-07	2007-08	2008-09	2009-10
Total	17	30	25	22	20	24	29	15	10	5
Sex										
Male	17	28	24	21	19	24	26	14	10	5
Female	-	2	1	1	1	-	3	1	-	-
Age										
14	3	1	2	5	3	2	8	3	-	-
15	11	18	16	12	9	20	15	10	9	5
16	3	9	5	5	7	1	5	2	-	-
17	-	2	2	-	1	1	1	-	1	-
Crime/offence										
All crimes	16	24	25	18	19	22	22	13	7	5
Non-sexual crimes of violence	9	12	19	10	12	10	9	3	3	2
Crimes of indecency	-	1	1	1	-	-	1	-	1	1
Crimes of dishonesty	3	4	1	5	2	5	3	3	-	-
Fire-raising, vandalism etc.	-	2	2	1	2	-	4	-	-	-
Other crimes	4	5	2	1	3	7	5	7	3	2
Miscellaneous offences	1	6	-	4	1	2	7	2	3	-
Time spent in custody ¹										
Less than 7 days	2	7	5	5	9	8	8	5	9	3
7 - 13 days	5	17	15	11	5	12	15	4	5	3
14 - 29 days	4	6	3	7	3	4	8	2	1	-
30 - 59 days	1	2	2	1	3	3	4	2	2	-
60 -90 days	1	3	2	1	-	-	-	-	-	-
Greater than 90 days	1	2	-	-	2	1	1	-	-	-
Average time spent in custody (days)	36	22	16	14	22	18	18	13	12	6

Note: See Section 5 for details on [unruly certificates](#).

**Direct sentenced receptions to penal establishments by age and sex:
2000-01 to 2009-10**

Table 12

	2000-01	2001-02	2002-03	2003-04	2004-05	2005-06	2006-07	2007-08	2008-09	2009-10	% change over past year
Total	11,595	12,176	12,828	12,522	12,576	12,922	13,990	14,204	14,634	14,056	-4
Under 16	-	1	4	5	-	2	3	5	5	1	-80
16	86	103	134	96	123	134	159	130	109	89	-18
17	360	358	373	354	317	373	388	406	374	323	-14
18	626	532	484	456	498	513	555	585	585	570	-3
19	687	641	599	510	537	568	581	619	590	548	-7
20	733	756	631	581	473	573	599	611	601	614	2
21 - 30	5,506	5,897	6,285	6,155	5,920	5,689	6,099	6,371	6,418	6,132	-4
31 - 40	2,565	2,692	3,056	3,075	3,189	3,413	3,638	3,524	3,779	3,548	-6
41 - 50	710	831	881	919	1,156	1,211	1,519	1,460	1,642	1,690	3
Over 50	322	365	381	371	363	446	449	493	531	541	2
Men	11,029	11,487	12,115	11,744	11,725	12,090	13,057	13,262	13,609	13,034	-4
Under 16	-	1	4	4	-	2	3	5	5	1	-80
16	81	100	128	94	117	134	147	125	104	84	-19
17	347	339	353	336	299	364	376	383	350	293	-16
18	588	516	453	440	473	487	518	563	555	541	-3
19	657	601	570	468	507	544	551	583	566	516	-9
20	687	700	594	541	431	544	560	584	565	585	4
21 - 30	5,221	5,553	5,931	5,756	5,493	5,284	5,639	5,914	5,934	5,678	-4
31 - 40	2,445	2,538	2,869	2,894	2,979	3,161	3,410	3,287	3,496	3,282	-6
41 - 50	685	788	844	858	1,084	1,146	1,429	1,368	1,536	1,556	1
Over 50	318	351	369	353	342	424	424	450	498	498	-
Women	566	689	713	778	851	832	933	942	1,025	1,022	*
Under 16	-	-	-	1	-	-	-	-	-	-	-
16	5	3	6	2	6	-	12	5	5	5	-
17	13	19	20	18	18	9	12	23	24	30	25
18	38	16	31	16	25	26	37	22	30	29	-3
19	30	40	29	42	30	24	30	36	24	32	33
20	46	56	37	40	42	29	39	27	36	29	-19
21 - 30	285	344	354	399	427	405	460	457	484	454	-6
31 - 40	120	154	187	181	210	252	228	237	283	266	-6
41 - 50	25	43	37	61	72	65	90	92	106	134	26
Over 50	4	14	12	18	21	22	25	43	33	43	30

Notes: Receptions do not equate to persons received since someone receiving a custodial sentence after a period on remand, or several custodial sentences at different times or from different courts, will be counted more than once. [Counting conventions](#) are described in more detail in Section 5.

**Direct sentenced receptions to penal establishments by main crime/offence:
2000-01 to 2009-10**

Table 13

	2000-01	2001-02	2002-03	2003-04	2004-05	2005-06	2006-07	2007-08	2008-09	2009-10	% change over past year
Total crimes & offences	11,595	12,176	12,828	12,522	12,576	12,922	13,990	14,204	14,634	14,056	-4
Crimes	8,317	8,914	9,104	8,834	8,657	8,668	9,296	9,556	9,887	9,701	-2
<i>Non-sexual crimes of violence</i>	1,313	1,461	1,583	1,710	1,555	1,483	1,509	1,675	1,766	1,772	*
Homicide	122	134	118	154	153	114	127	146	126	119	-6
Serious assault and attempted murder	681	785	891	994	898	898	920	1,041	1,154	1,131	-2
Robbery	469	513	514	503	440	396	396	409	428	426	*
Other	41	29	60	59	64	75	66	79	58	96	66
<i>Crimes of indecency</i>	205	223	213	236	220	247	207	180	197	221	12
Rape and attempted rape	39	48	54	54	54	63	54	50	43	54	26
Indecent assault	32	25	24	33	35	22	14	11	9	7	-22
Lewd and indecent behaviour	96	126	106	113	90	117	104	72	109	118	8
Other	38	24	29	36	41	45	35	47	36	42	17
<i>Crimes of dishonesty</i>	4,739	5,041	4,850	4,396	4,198	3,926	3,994	3,747	3,928	3,709	-6
Housebreaking	1,258	1,246	1,174	1,108	1,012	891	929	781	780	774	-1
Theft by opening lockfast places (OLP)	162	197	175	173	113	126	115	136	138	126	-9
Theft from a motor vehicle (by OLP)	108	105	155	153	159	120	111	139	127	90	-29
Theft of a motor vehicle	472	367	360	241	212	164	181	146	171	124	-27
Shoplifting	1,028	1,298	1,650	1,523	1,491	1,528	1,488	1,403	1,450	1,391	-4
Other theft	1,229	1,330	826	727	790	689	666	646	709	686	-3
Fraud	123	144	133	133	115	137	180	186	239	210	-12
Other	359	354	377	338	306	271	324	310	314	308	-2
<i>Fire-raising, vandalism etc</i>	222	246	282	325	331	360	367	397	411	389	-5
Fire-raising	34	40	45	60	50	72	70	77	82	60	-27
Vandalism etc	188	206	237	265	281	288	297	320	329	329	-
<i>Other crimes</i>	1,838	1,943	2,176	2,167	2,353	2,652	3,219	3,557	3,585	3,610	1
Crimes against public justice	394	448	498	494	558	672	930	1,036	1,010	1,009	*
Handling offensive weapons	587	555	715	662	781	918	1,081	1,117	1,170	1,075	-8
Drugs	839	924	951	996	989	1,005	1,121	1,292	1,328	1,463	10
Other	18	16	12	15	25	57	87	112	77	63	-18
Offences	3,187	3,199	3,671	3,620	3,863	4,227	4,660	4,613	4,727	4,326	-8
<i>Miscellaneous offences</i>	1,970	2,052	2,241	2,235	2,642	3,054	3,503	3,566	3,839	3,639	-5
Common assault	1,090	1,095	1,162	1,171	1,426	1,601	1,782	1,865	2,038	1,956	-4
Breach of the peace	778	819	911	875	1,014	1,167	1,400	1,411	1,424	1,387	-3
Drunkenness	-	2	4	2	1	-	3	1	2	1	-50
Breach of social work orders	48	53	54	59	60	89	132	80	102	61	-40
Other	54	83	110	128	141	197	186	209	273	234	-14
<i>Motor vehicle offences</i>	1,217	1,147	1,430	1,385	1,221	1,173	1,157	1,047	888	687	-23
Dangerous and careless driving	135	114	176	174	153	142	170	175	154	123	-20
Drunk driving	176	149	196	179	188	163	194	168	164	130	-21
Speeding	2	1	1	-	-	-	4	-	-	3	n/a
Unlawful use of vehicle	898	871	1,041	1,020	867	851	775	690	560	420	-25
Vehicle defect offences	-	1	-	-	2	-	2	-	2	2	-
Other	6	11	16	12	11	17	12	14	8	9	13
Unknown charge	1	-	-	-	-	2	-	-	-	-	-
Other jurisdiction charge	90	63	53	68	56	25	34	35	20	29	45

Notes: Receptions do not equate to persons received since someone receiving a custodial sentence after a period on remand, or several custodial sentences at different times or from different courts, will be counted more than once. [Counting conventions](#) are described in more detail in Section 5. Prior to 2004-05, shoplifting is included in other theft and breaches of social work orders are included in other. Further breakdowns for adults and young offenders by sex are published on the web in Tables 13a-f.

Direct sentenced receptions to penal establishments by length of sentence, age and sex: 2000-01 to 2009-10

Table 14

	2000-01	2001-02	2002-03	2003-04	2004-05	2005-06	2006-07	2007-08	2008-09	2009-10	% change over past year
Total	11,595	12,176	12,828	12,522	12,576	12,922	13,990	14,204	14,634	14,056	-4
Less than 30 days	307	350	365	331	359	383	465	487	533	534	*
30-59 days	840	923	984	950	817	910	1,136	1,020	897	704	-22
60-89 days	1,021	1,087	1,200	1,149	1,539	1,976	2,264	2,112	1,682	1,517	-10
90 days/3 months	2,381	2,360	2,392	2,276	2,182	1,902	1,777	1,583	1,178	840	-29
Over 3 months - less than 6 months	2,269	2,454	2,549	2,496	2,841	2,817	2,982	2,976	2,977	2,756	-7
6 months - less than 2 years	3,331	3,537	3,745	3,633	3,364	3,461	3,811	4,305	5,549	5,791	4
2 years - less than 4 years	741	678	777	862	798	872	963	1,065	1,168	1,292	11
4 years & over (excluding life)	609	695	743	726	585	530	517	581	560	529	-6
Life/Section 205	96	92	73	99	91	71	75	75	90	93	3
Average sentence imposed (days)	317	315	326	336	305	295	291	313	324	343	6
Young offenders	2,492	2,391	2,225	2,002	1,948	2,163	2,285	2,356	2,264	2,145	-5
Less than 30 days	67	65	77	58	60	58	58	76	70	51	-27
30-59 days	164	146	147	142	101	111	137	154	126	87	-31
60-89 days	201	216	188	158	200	321	300	287	223	191	-14
90 days/3 months	561	525	405	381	322	315	283	240	193	135	-30
Over 3 months - less than 6 months	478	487	410	353	412	409	482	466	414	396	-4
6 months - less than 2 years	804	754	768	691	653	706	809	862	976	995	2
2 years - less than 4 years	121	122	135	121	136	154	151	175	187	226	21
4 years & over (excluding life)	83	74	82	86	55	74	54	82	60	52	-13
Life/Section 205	13	2	13	12	9	15	11	14	15	12	-20
Average sentence imposed (days)	263	259	290	303	286	301	283	316	314	348	11
Adults	9,103	9,785	10,603	10,520	10,628	10,759	11,705	11,848	12,370	11,911	-4
Less than 30 days	240	285	288	273	299	325	407	411	463	483	4
30-59 days	676	777	837	808	716	799	999	866	771	617	-20
60-89 days	820	871	1,012	991	1,339	1,655	1,964	1,825	1,459	1,326	-9
90 days/3 months	1,820	1,835	1,987	1,895	1,860	1,587	1,494	1,343	985	705	-28
Over 3 months - less than 6 months	1,791	1,967	2,139	2,143	2,429	2,408	2,500	2,510	2,563	2,360	-8
6 months - less than 2 years	2,527	2,783	2,977	2,942	2,711	2,755	3,002	3,443	4,573	4,796	5
2 years - less than 4 years	620	556	642	741	662	718	812	890	981	1,066	9
4 years & over (excluding life)	526	621	661	640	530	456	463	499	500	477	-5
Life/Section 205	83	90	60	87	82	56	64	61	75	81	8
Average sentence imposed (days)	332	329	333	342	309	293	293	312	326	342	5
Men	11,029	11,487	12,115	11,744	11,725	12,090	13,057	13,262	13,609	13,034	-4
Less than 30 days	295	317	343	307	339	348	419	441	489	484	-1
30-59 days	786	864	930	882	745	834	1,040	940	808	634	-22
60-89 days	957	1,013	1,125	1,064	1,426	1,847	2,118	1,972	1,561	1,398	-10
90 days/3 months	2,248	2,215	2,251	2,125	2,034	1,763	1,659	1,494	1,099	779	-29
Over 3 months - less than 6 months	2,151	2,318	2,394	2,345	2,648	2,680	2,796	2,800	2,767	2,539	-8
6 months - less than 2 years	3,192	3,351	3,547	3,406	3,118	3,215	3,540	3,984	5,157	5,397	5
2 years - less than 4 years	714	642	736	818	756	821	911	996	1,099	1,208	10
4 years & over (excluding life)	595	675	720	703	569	515	500	560	543	506	-7
Life/Section 205	91	92	69	94	90	67	74	75	86	89	3
Average sentence imposed (days)	321	319	330	341	311	299	295	316	328	347	6
Women	566	689	713	778	851	832	933	942	1,025	1,022	*
Less than 30 days	12	33	22	24	20	35	46	46	44	50	14
30-59 days	54	59	54	68	72	76	96	80	89	70	-21
60-89 days	64	74	75	85	113	129	146	140	121	119	-2
90 days/3 months	133	145	141	151	148	139	118	89	79	61	-23
Over 3 months - less than 6 months	118	136	155	151	193	137	186	176	210	217	3
6 months - less than 2 years	139	186	198	227	246	246	271	321	392	394	1
2 years - less than 4 years	27	36	41	44	42	51	52	69	69	84	22
4 years & over (excluding life)	14	20	23	23	16	15	17	21	17	23	35
Life/Section 205	5		4	5	1	4	1		4	4	-
Average sentence imposed (days)	231	242	257	263	227	238	237	275	271	292	8

Notes: Receptions do not equate to persons received since someone receiving a custodial sentence after a period on remand, or several custodial sentences at different times or from different courts, will be counted more than once. [Counting conventions](#) are described in more detail in Section 5. Average sentence imposed excludes life and Section 205 sentences.

Length of sentence imposed for direct sentenced receptions by main crime/offence, age and sex: 2009-10 **Table 15**

	Number received	Average sentence (days)	Percentage sentenced to							
			< 30 days	30-59 days	60-89 days	90 days-3 months	Over 3 months - less than 6 months	6 months - less than 2 years	2 years - less than 4 years	4 years & over (excluding life)
Total										
Serious assault and attempted murder	1,123	764	1	1	2	2	6	50	27	13
Robbery	423	742	1	1	-	2	6	48	29	13
Housebreaking	773	305	1	2	4	4	19	61	8	1
Theft by opening lockfast places (OLP)	126	224	2	2	13	5	19	57	3	-
Theft from a motor vehicle (by OLP)	90	253	-	4	3	6	24	57	6	-
Theft of a motor vehicle	124	214	4	2	7	8	26	50	2	1
Shoplifting	1,390	137	9	8	20	6	28	29	*	-
Fraud	210	265	4	3	16	6	17	45	9	*
Drugs	1,460	637	3	3	5	3	9	39	29	10
Common assault	1,955	222	2	4	11	8	25	46	4	*
Breach of the peace	1,386	142	6	10	20	10	25	27	1	-
Unlawful use of a motor vehicle	420	202	3	3	6	4	24	60	-	-
Young offenders										
Serious assault and attempted murder	356	718	1	1	2	2	4	50	32	8
Robbery	121	582	1	2	-	2	7	54	33	2
Housebreaking	110	246	1	5	3	8	27	52	5	-
Theft by opening lockfast places (OLP)	15	205	-	7	20	-	13	60	-	-
Theft from a motor vehicle (by OLP)	10	297	-	-	-	10	30	50	10	-
Theft of a motor vehicle	50	220	-	4	8	4	34	48	2	-
Shoplifting	61	163	10	7	18	3	26	36	-	-
Fraud	10	251	-	10	40	10	10	20	-	10
Drugs	60	625	-	-	2	2	12	40	43	2
Common assault	375	213	1	2	10	9	25	52	1	-
Breach of the peace	172	157	6	8	16	9	26	34	1	-
Unlawful use of a motor vehicle	33	184	-	3	9	6	36	45	-	-
Adults										
Serious assault and attempted murder	767	786	1	1	1	1	7	51	24	15
Robbery	302	806	1	1	-	2	6	46	28	17
Housebreaking	663	315	1	2	4	3	18	63	9	1
Theft by opening lockfast places (OLP)	111	226	2	1	12	5	20	57	4	-
Theft from a motor vehicle (by OLP)	80	247	-	5	4	5	24	58	5	-
Theft of a motor vehicle	74	209	7	1	7	11	20	51	1	1
Shoplifting	1,329	136	9	8	20	6	29	28	*	-
Fraud	200	265	4	3	15	6	18	46	9	-
Drugs	1,400	638	3	3	5	3	9	39	28	10
Common assault	1,580	225	2	5	11	8	25	44	4	1
Breach of the peace	1,214	140	6	11	21	10	25	26	1	-
Unlawful use of a motor vehicle	387	203	3	3	6	4	23	62	-	-
Men										
Serious assault and attempted murder	1,018	791	1	*	1	1	5	50	27	14
Robbery	404	758	1	1	-	2	6	47	30	13
Housebreaking	767	306	1	2	4	4	19	61	8	1
Theft by opening lockfast places (OLP)	117	218	2	2	14	3	20	57	3	-
Theft from a motor vehicle (by OLP)	89	253	-	4	3	6	25	56	6	-
Theft of a motor vehicle	124	214	4	2	7	8	26	50	2	1
Shoplifting	1,178	135	9	8	20	7	28	28	*	-
Fraud	169	267	3	2	17	5	19	44	9	1
Drugs	1,307	645	3	3	5	3	9	39	29	10
Common assault	1,825	225	2	4	11	8	25	46	4	*
Breach of the peace	1,328	144	6	10	20	10	26	27	1	-
Unlawful use of a motor vehicle	414	202	3	3	7	4	24	60	-	-
Women										
Serious assault and attempted murder	105	507	2	4	3	2	16	49	20	5
Robbery	19	413	-	-	-	5	16	63	11	5
Housebreaking	6	197	-	17	-	17	50	17	-	-
Theft by opening lockfast places (OLP)	9	296	-	-	-	22	11	56	11	-
Theft from a motor vehicle (by OLP)	1	183	-	-	-	-	-	100	-	-
Theft of a motor vehicle	-	-	-	-	-	-	-	-	-	-
Shoplifting	212	152	8	8	16	5	29	34	1	-
Fraud	41	257	7	10	12	7	10	49	5	-
Drugs	153	567	1	3	5	3	12	41	30	-
Common assault	130	181	1	11	12	8	25	43	1	-
Breach of the peace	58	114	9	14	28	10	17	22	-	-
Unlawful use of a motor vehicle	6	177	-	-	-	17	33	50	-	-

Notes: Receptions do not equate to persons received since someone receiving a custodial sentence after a period on remand, or several custodial sentences at different times or from different courts, will be counted more than once. [Counting conventions](#) are described in more detail in Section 5. Figures exclude life and Section 205 sentences.

Fine default receptions to penal establishments by age, sex, length of sentence and amount of fine outstanding: 2000-01 to 2009-10 **Table 16**

	2000-01	2001-02	2002-03	2003-04	2004-05	2005-06	2006-07	2007-08	2008-09	2009-10
Total	8,162	7,966	7,908	7,652	6,807	6,221	5,969	3,616	1,506	1,333
Under 21	1,159	1,194	1,074	875	726	771	697	403	185	180
21 - 30	4,026	3,974	3,898	3,758	3,184	2,913	2,735	1,706	707	627
31 - 40	2,171	1,954	2,072	2,181	1,967	1,734	1,680	999	406	350
41 - 50	607	637	666	624	719	617	703	425	171	141
Over 50	199	207	198	214	211	186	154	83	37	35
Men	7,501	7,359	7,234	7,017	6,276	5,741	5,526	3,352	1,408	1,243
Under 21	1,086	1,134	1,024	821	693	744	653	385	176	174
21 - 30	3,682	3,678	3,539	3,442	2,919	2,680	2,537	1,575	664	582
31 - 40	1,982	1,761	1,862	1,980	1,800	1,581	1,534	920	376	324
41 - 50	560	592	623	575	663	563	654	396	158	129
Over 50	191	194	186	199	201	173	148	76	34	34
Women	661	607	674	635	531	480	443	264	98	90
Under 21	73	60	50	54	33	27	44	18	9	6
21 - 30	344	296	359	316	265	233	198	131	43	45
31 - 40	189	193	210	201	167	153	146	79	30	26
41 - 50	47	45	43	49	56	54	49	29	13	12
Over 50	8	13	12	15	10	13	6	7	3	1
Length of sentence										
Less than 7 days	1,368	1,397	1,274	1,169	1,110	995	927	521	129	86
7 days	3,529	3,440	3,328	3,128	2,566	2,323	2,269	1,357	558	540
8-13 days	944	936	921	951	935	850	804	473	155	95
14 days	1,665	1,592	1,797	1,790	1,551	1,483	1,397	860	405	375
15-29 days	537	483	489	513	539	484	475	337	213	188
30-59 days	110	93	87	90	94	73	90	59	40	37
Over 60 days	9	25	12	11	12	13	7	9	6	12
Average sentence imposed (days)	10	10	10	11	11	11	11	11	13	15
Fine outstanding										
Less than £50	296	315	218	192	174	137	128	73	25	11
£50 - less than £100	1,298	1,256	1,147	1,011	834	689	732	438	126	113
£100 - less than £200	2,687	2,612	2,578	2,399	2,095	1,892	1,810	1,021	369	307
£200 - less than £500	3,058	2,999	3,130	3,184	2,816	2,723	2,554	1,593	660	591
£500 - less than £1,000	633	598	654	701	720	655	626	399	260	238
£1,000 - less than £2,500	121	105	109	110	134	114	110	84	62	59
£2,500 - less than £5,000	4	8	12	8	9	8	5	4	4	6
£5,000 or more	3	6	1	5	3	3	3	2	-	8
Non-offence	62	67	59	42	22	-	1	2	-	-
Average fine outstanding (£)	238	242	249	263	278	277	277	286	339	536

Notes: Receptions do not equate to persons received since someone receiving a custodial sentence after a period on remand, or several custodial sentences at different times or from different courts, will be counted more than once. Counting conventions and fine default are described in more detail in Section 5.. A breakdown by crime type is published on the web in Table 16a.

Prison population and rate per 100,000 population by jurisdiction: 2009

Table 17

	Prison population	Rate per 100,000 ¹	% change from previous year	Population at
Australia	29,317	134	6	30 June 2009
Austria	8,671	103	10	1 May 2010
Belgium	10,159	94	2	1 March 2009
Bulgaria	9,071	120	-4	1 December 2009
Canada	39,142	116	2	2008-09
Cyprus	671	84	1	31 August 2008
Czech Republic ²	22,013	210	7	30 April 2010
Denmark	3,967	71	15	20 May 2010
England & Wales	85,086	156	3	30 April 2010
Estonia	3,656	273	0	1 January 2010
Finland	3,231	60	-10	31 December 2009
France	59,655	96	6	1 July 2008
Germany	70,817	87	-3	30 November 2009
Greece	11,547	102	-6	1 December 2009
Hungary	15,373	153	3	31 December 2009
Ireland (Eire)	4,214	93	27	10 May 2010
Italy	67,444	111	22	30 April 2010
Japan	78,952	62	-2	31 December 2009
Latvia ²	7,200	319	4	July 2009
Lithuania	8,000	239	2	1 January 2009
Luxembourg	706	139	-5	1 June 2010
Malta	583	140	51	April 2010
Netherlands	15,604	94	-5	30 April 2010
New Zealand	8,532	196	8	19 April 2010
Northern Ireland	1,425	80	2	26 April 2010
Norway	3,446	71	5	1 May 2010
Poland	85,530	224	1	31 March 2010
Portugal	11,493	108	5	5 May 2010
Romania	27,638	129	5	4 May 2010
Russian Federation	862,300	608	-3	1 February 2010
Scotland	8,185	158	5	30 June 2009
Slovakia	9,316	172	14	31 December 2009
Slovenia	1,385	67	5	17 May 2010
South Africa	164,793	331	1	31 March 2010
Spain	76,753	166	4	30 April 2010
Sweden	7,286	78	6	1 October 2009
Switzerland	6,084	79	5	2 September 2009
Turkey	119,112	164	18	30 April 2010
USA	2,297,400	748	-1	30 June 2009

Sources: Kings College International Centre for Prison Studies.

Note: Comparisons of the prison population in different jurisdictions should be treated with caution due to the different justice systems and recording rules in operation.

1. Rate based on estimated total national population.

2. Annual data not available. Annual rate of change estimated from available data.

5. Notes and definitions

Coverage and data collection

28. Before April 1996, population and reception information was collected from the penal establishments via monthly manual statistical returns. In April 1996, a computerised Prisoner Records System (PRS) was introduced by the Scottish Prison Service to enable on-line recording of information on individual prisoners.

29. In July 2004, an improved computerised information system (PR2) was introduced. Due to the way some information is recorded on the new system, some of the tables published in earlier bulletins cannot be reproduced.

30. In 2009 there were 15 penal establishments in Scotland. Castle Huntly and Noranside merged in 2007 to form the Open Estate. In addition, there are nine legalised police cells which could be used to detain prisoners. (These tend to be located in more rural areas and are primarily used to detain prisoners temporarily for court attendance).

31. Of the 15 establishments in Scotland, 14 cater mainly for adult prisoners. There is one dedicated young offenders institution in Polmont and two other young offenders institutions are incorporated within the main prison at Cornton Vale and Perth. Due to the increase in the young offender population, Friarton Hall, a separate building which is part of Perth prison, began to be used to house male young offenders in 2006. Cornton Vale continues to be the only all female establishment in the Scottish Prison Service estate. A small number of persons aged 21 or over are received into young offenders institutions. In addition, prisoners up to the age of 23 may be kept at young offenders institutions.

Counting conventions

32. Prison receptions provide a useful indication of flows through the prison service but are not equivalent to persons received. If a person enters prison on remand or having been sentenced by one court, this is counted as one reception. Where a person receives a custodial sentence after a period on remand or while serving another custodial sentence, this constitutes a further reception. If several custodial sentences are imposed on the same person by two or more courts in one day, this counts as several receptions.

33. Direct sentenced prison receptions (this excludes receptions for fine default) are counted differently from custodial court disposals published in the Scottish Government publication *Criminal Proceedings in Scottish Courts*. Most of this difference can be explained by the fact that when a person is given consecutive custodial sentences for several separate sets of charges from the same court on the same day, this is counted as two custodial sentences in the court statistics, but only one direct sentenced reception.

34. The table below illustrates the difference between direct sentenced prison receptions and custodial court disposals based on the normal counting conventions, and gives an estimate of the equivalent court-derived 'receptions' using the same counting convention as prison statistics.

Comparison of direct sentenced prison receptions to court derived 'receptions': Scotland

	2002-03	2003-04	2004-05	2005-06	2006-07	2007-08	2008-09
Custodial court disposals	15,614	14,785	15,012	15,079	16,714	16,686	16,875
Court derived 'receptions'	12,140	11,391	11,425	11,533	12,948	12,955	13,374
Direct sentenced receptions	12,828	12,522	12,576	12,922	13,990	14,204	14,634

Source: Scottish Government Justice Analytical Services courts proceedings database and prisons data.

Notes: Due to a change in recording for 2007-08, courts data exclude cases where the main charge is breach of social work order. Court-derived 'receptions' have been estimated by excluding multiple sets of charges on the same day.

35. Only the main crime or offence is used for persons convicted of more than one criminal act. The main crime or offence is the most serious, assumed to be that for which the longest sentence was imposed. Where sentences are to be served consecutively, the length of the sentence recorded is the sum of the sentences. For concurrent sentences, the period of the longest sentence is given. These sentences represent the period which would be served in the absence of any early release, such as Home Detention Curfew or parole.

Fine default

36. From 1996-97, fine default information includes a separate category of non-offence (non-offence receptions are contempt of court and breach of a supervised attendance order). These receptions are excluded from any calculation of average fine amount.

37. Receptions for compensation order default are included in the fine default figures as these receptions are not separately identifiable from the recorded data.

Unruly certificates

38. Children may be remanded in custody on an 'unruly certificate' under Sections 24 and 297 of the Criminal Procedure (Scotland) Act 1975. This is where a child over the age of 14 appears before a court charged with a crime or offence and the court considers that release on bail or detention by a local authority is not appropriate because of the child's unruly character. The child may then be detained in the prison system on the authority of the court. The unruly certificate arrangements apply to children aged over 14 and, normally, under 16, although an upper age limit of 18 applies where a child is under a supervision requirement from a children's hearing.

39. The Scottish Government plans to abolish unruly certificates and a provision to repeal the legislation is included in the Criminal Justice and Licensing (Scotland) Bill passed in Parliament in 2010.

Home Detention Curfew

40. From July 2006, prisoners became eligible for early release from custody on Home Detention Curfew (HDC). The provisions for HDC are contained in the Management of Offenders etc (Scotland) Act 2005. This allows short term prisoners assessed as presenting a low risk of reoffending, to be released on licence between two weeks and four months early. The maximum period was extended to six months in April 2008, and the scheme extended to certain categories of long-term prisoners. Offenders are subject to electronically monitored restrictions on their movements for up to 12 hours per day for the remainder of their sentence. The primary aim of HDC is to facilitate reintegration of prisoners back into the community prior to final release. However, releasing prisoners early on HDC has also resulted in some degree of reduction in the average daily prison population.

Supervision level

41. This is the internal assessment of risk in custody used by the Scottish Prison Service. Prior to April 2002, there were five security categories which could be assigned to a prisoner, from category A, the highest security level, to category D the lowest. A category of limited D was also available exclusively for life sentence prisoners who could participate in activities approved by Scottish Ministers for the purposes of suitability to be assigned security category D. In April 2002, a new prisoner supervision system, specifically designed to assist the effective management of prisoners and to enhance public safety, was implemented giving supervision levels of High/Medium/Low.

Community Justice Authorities

42. The Management of Offenders etc. (Scotland) Act 2005 established new Community Justice Authorities (CJAs) to create a more coherent and flexible system of offender management through improved partnership working between the different agencies involved in the criminal justice system.

CJA structure

Tayside	Angus Dundee City Perth and Kinross
South West Scotland	Dumfries and Galloway East Ayrshire North Ayrshire South Ayrshire
Fife and Forth Valley	Clackmannanshire Falkirk Fife Stirling
Glasgow	Glasgow City
Northern	Aberdeen City Aberdeenshire Eilean Siar Highland Moray Orkney Islands Shetland Islands
Lothian and Borders	Edinburgh East Lothian Midlothian Scottish Borders West Lothian
Lanarkshire	North Lanarkshire South Lanarkshire
Northern Strathclyde	Argyll and Bute East Dunbartonshire East Renfrewshire Inverclyde Renfrewshire West Dunbartonshire

Classification of crimes/offences

43. The classification of crimes and offences used by the Scottish Government for criminal statistics contains approximately 350 codes. The detailed offence information contained on the warrants on the Prisoner Records System is mapped to the relevant classification code using the following groupings:

CRIMES

NON-SEXUAL CRIMES OF VIOLENCE

Homicide

(Also referred to as **Violence**)

Comprises murder and culpable homicide (including the statutory crimes of causing death by dangerous driving or causing death by careless driving while under the influence of drink or drugs).

Serious assault and attempted murder

Referred for short in the text as “serious assault”.

Robbery

Includes offences involving intent to rob.

Other

Includes threats, extortion and cruel and unnatural treatment of children.

CRIMES OF INDECENCY

(Also referred to as **Indecency**).

Rape and attempted rape

Indecent assault

Lewd & indecent behaviour

Other

Comprises lewd & indecent practices against children, indecent exposure.

Includes offences connected with prostitution, incest and sexual intercourse with girls aged under 16.

CRIMES OF DISHONESTY

(Also referred to as **Dishonesty**)

Housebreaking

Includes business as well as domestic premises.

Theft by opening a lockfast place

Theft of/from a motor vehicle

Shoplifting

Other theft

Includes theft of pedal cycles.

Fraud

Includes statutory fraud, except social security benefit fraud.

Other

Includes forgery, reset and embezzlement.

FIRE-RAISING, VANDALISM ETC

Fire-raising

Vandalism

Includes malicious mischief, vandalism and reckless conduct with firearms.

OTHER CRIMES

Crimes against public justice

Includes perjury, contempt of court, bail offences and failing to appear at court.

Handling an offensive weapon

Comprises carrying offensive weapons, restriction of offensive weapons legislation. (This crime category was previously included under the non-sexual crimes of violence group.)

Drugs

Includes importation, possession and supply of controlled drugs.

Other

Includes conspiracy and explosives offences.

OFFENCES

MISCELLANEOUS OFFENCES

Common assault

Also sometimes termed petty or minor assault

Breach of the peace

Drunkenness

Other

Includes offences against local legislation, Revenue and Excise Acts, Licensing Acts, Wireless Telegraphy Acts / Communication Acts.

MOTOR VEHICLE OFFENCES

Dangerous and careless driving

Prior to 1992 this was known as “reckless and careless driving”.

Drink/drug driving

Comprises driving or in charge of motor vehicle while unfit through drink or drugs, blood alcohol content above limit and failing to provide breath, blood or urine specimens.

Speeding

Includes the small number of motorway and clearway offences, as these are mostly speeding-related.

Unlawful use of vehicle

Comprises driving while disqualified, without a licence, insurance, test certificate, vehicle tax and registration and identification offences.

Vehicle defect offences

Comprises construction and use and lighting offences.

Other

Includes parking, record of work offences, neglect of traffic directions, failing to stop after accident and mobile phone offences.

A NATIONAL STATISTICS PUBLICATION FOR SCOTLAND

Official and National Statistics are produced to high professional standards set out in the Code of Practice for Official Statistics at <http://www.statisticsauthority.gov.uk/assessment/code-of-practice/code-of-practice-for-official-statistics.pdf>. Both undergo regular quality assurance reviews to ensure that they meet customer needs and are produced free from any political interference.

Statistics assessed, or subject to assessment, by the UK Statistics Authority carry the National Statistics label, a stamp of assurance that the statistics have been produced and explained to high standards and that they serve the public good.

Further information about Official and National Statistics can be found on the UK Statistics Authority website at www.statisticsauthority.gov.uk

SCOTTISH GOVERNMENT STATISTICIAN GROUP

Our Aim

To provide relevant and reliable information, analysis and advice that meet the needs of government, business and the people of Scotland.

For more information on the Statistician Group, please see the Scottish Government website at www.scotland.gov.uk/statistics

Correspondence and enquiries

Enquiries on this publication should be addressed to:

Elizabeth Fraser
Justice Analytical Services
Justice and Communities Directorate
GWR, St Andrews House
Edinburgh EH1 3DG
Telephone: 0131 244 2147;
e-mail: elizabeth.fraser@scotland.gsi.gov.uk

General enquiries on Scottish Government statistics can be addressed to:

Office of the Chief Statistician
Scottish Government
1N.04, St Andrews House
Edinburgh EH1 3DG
Telephone: 0131 244 0442
e-mail: statistics.enquiries@scotland.gsi.gov.uk

Further contact details, e-mail addresses and details of previous and forthcoming publications can be found on the Scottish Government Website at www.scotland.gov.uk/statistics

Complaints and suggestions

If you are not satisfied with our service, please write to the Chief Statistician, Mr Rob Wishart, 1N.04, St Andrews House, Edinburgh, EH1 3DG, Telephone: (0131) 244 0302, e-mail rob.wishart@scotland.gsi.gov.uk. We also welcome any comments or suggestions that would help us to improve our standards of service.

ScotStat

If you would like to be consulted about new or existing statistical collections or receive notification of forthcoming statistical publications, please register your interest on the Scottish Government ScotStat website at www.scotland.gov.uk/scotstat

ISSN 0264 1178

ISBN: 978-0-7559-9872-2

Crown Copyright

Brief extracts from the Crown Copyright material in this publication may be reproduced provided the source is fully acknowledged.